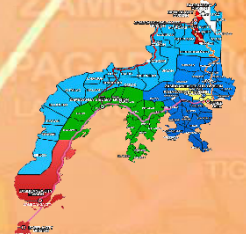




Republic of the Philippines  
**Department of Education**  
 Regional Office IX, Zamboanga Peninsula



**5**



Zest for Progress  
 Zeal of Partnership

# MUSIC

## Quarter 2, Wk. 2 – Module 2 Ang Melodic Direction at Ang Melodic Contour



- JANUARY  
*Matuguhon*
- FEBRUARY  
*Matugugmaon*
- MARCH  
*Matinabungan*
- APRIL  
*Matinahuron*
- MAY  
*Matapsay og Matampyo*
- JUNE  
*Maabik og Masinod sa  
Dakalng Oras*
- JULY  
*Maantigo og Maabilidad*
- AUGUST  
*Maginhuhunoon  
para sa Uban*
- SEPTEMBER  
*Madaginaton*
- OCTOBER  
*Matinud-anon*
- NOVEMBER  
*Masaligan*
- DECEMBER  
*Maalampon*

Name of Learner: \_\_\_\_\_

Grade & Section: \_\_\_\_\_

Name of School: \_\_\_\_\_



## Alamin



Pagmasdan ang mga larawan sa itaas. Ano ang iyong napapansin? Ilarawan ang mga anyong lupa na inyong nakikita.

May matataas na mga bundok at mabababang mga kapatagan at lambak. Ang mga ito ang nagpapaganda ng ating kapaligiran.

Ang mga melody ng isang awit ay may iba't ibang direksyon. May mga bahaging mataas at may mga tonong mababa.

Sa modyul na ito, inaasahan na makakamit mo ang mga sumusunod na layunin:

- A. Natutukoy kung ano ang *melody* at ang iba't ibang uri ng galaw o direksyon, *range*, at sa distansiya nito.
- B. Naaawit ang mga note/nota nang wasto ayon sa taas o baba nito gamit ang mga *so-fa syllables*.

**(MU5ME-IIe-8)**



## Subukin

Panuto : Basahin at unawain ang mga sumusunod na tanong. Isulat ang titik ng tamang sagot sa patlang.

\_\_\_\_\_ 1. Ano ang tawag sa mahalagang elemento ng musika?

- a. range                      b. rhythm                      c. melody                      d. pitch

\_\_\_\_\_ 2. Ilang direksiyon ang pinatutunguhan ng mga *note*/nota ng *melody* ng isang awit o musika?

- a. isa                      b. dalawa                      c. tatlo                      d. apat

\_\_\_\_\_ 3. Ano ang dalawang uri ng range sa musika?

- a. narrow at wide    c. open and close  
b. ascending at descending    d. up and down

\_\_\_\_\_ 4. Ano ang tawag sa direksiyon ng musika kapag ang mga note ay nananatili sa isang linya o puwang at hindi gumagalaw?

- a. Ascending in skips    c. descending in skips  
b. Repeated o stationary    d. pitch

\_\_\_\_\_ 5. Ano ang dalawang uri ng direksiyon ng melody sa musika?

- a. ascending at descending    c. narrow at wide  
b. rhythm at pitch    d. up and down



## Balikan

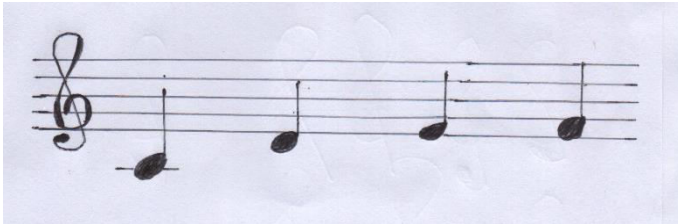
Gaano kataas o kababa ang iyong boses ? Sumali sa pagsasanay ng vocalization upang malaman natin ang range ng iyong boses.



## Tuklasin

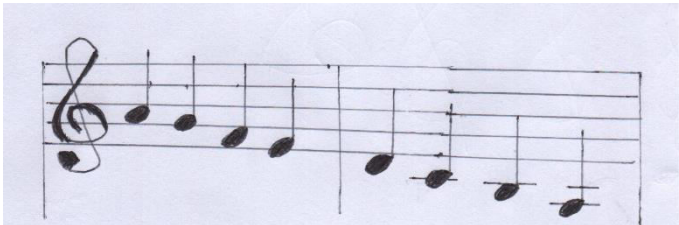
Tukuyin ang mga note sa bawat staff kung ito ay ascending, descending o repeated. Ayusin ang pagkakaayos ng mga titik.

1.



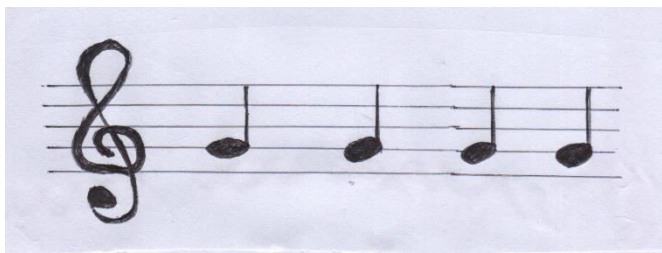
sacengdin-\_\_\_\_\_

2.



decsedning-\_\_\_\_\_

3.



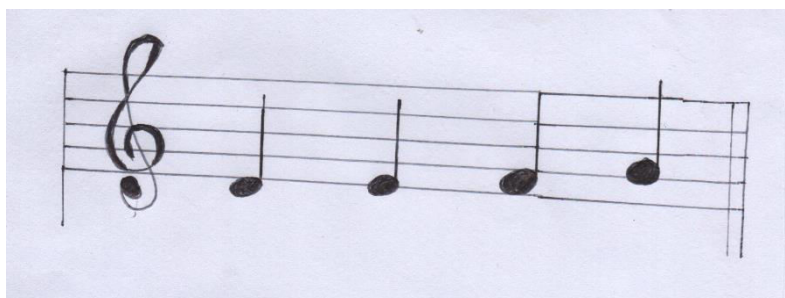
peatedre-\_\_\_\_\_



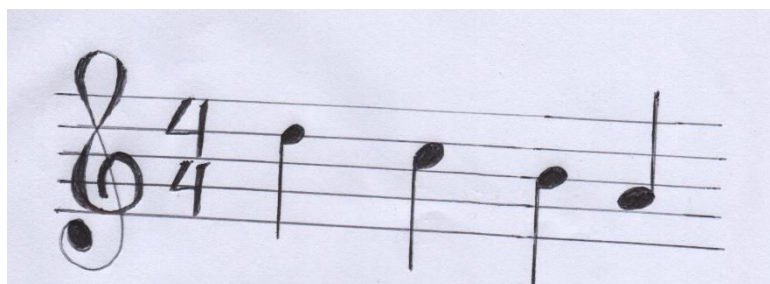
### Suriin

Tukuyin ang mga note/nota sa bawat staff at isulat kung ito ay ascending, descending o repeated na nota.

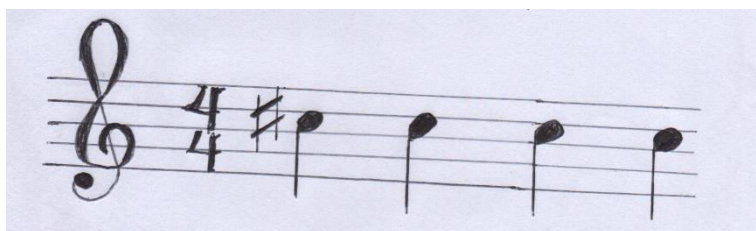
1. \_\_\_\_\_



2. \_\_\_\_\_



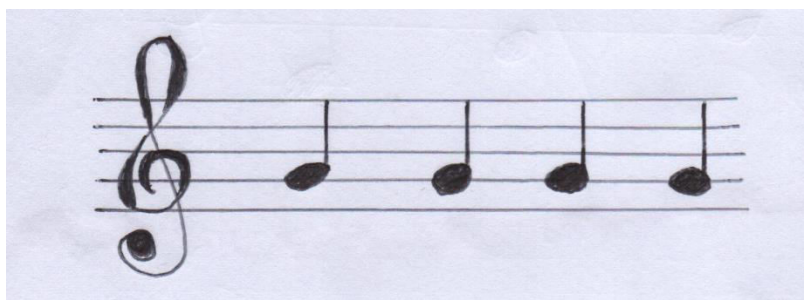
3. \_\_\_\_\_



4. \_\_\_\_\_



4. \_\_\_\_\_

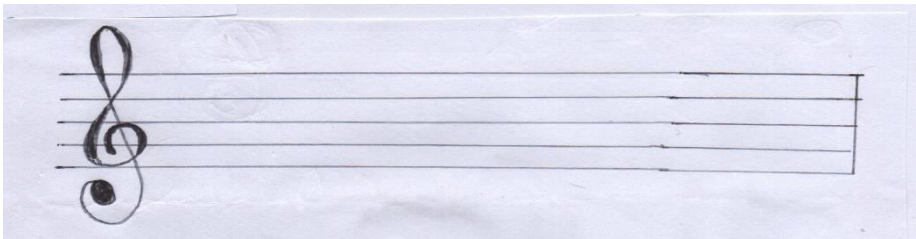




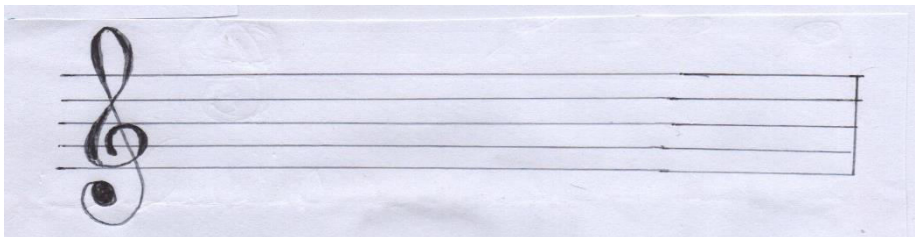
## Pagyamanin

Iguhit ang mga nota/note sa bawat staff na naaayon sa direksiyon ng musika.

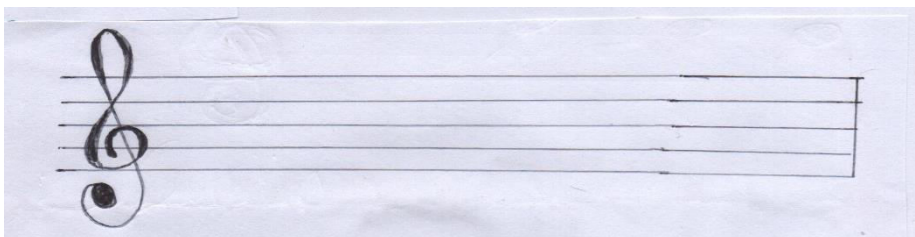
### 1. Ascending in steps



### 2. Descending in steps



### 3. Repeated/Stationary





## Isaisip

Ano ang natutunan mo sa araling ito?

---

---

---

---



## Isagawa

Awitin ang sumusunod na mga note/ nota ayon sa so-fa syllable.

1. Ascending in steps

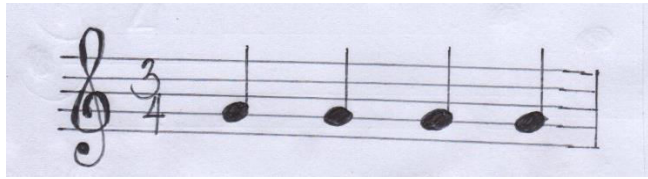


2. Descending in steps





### 3. Repeated o stationary



#### Rubriks

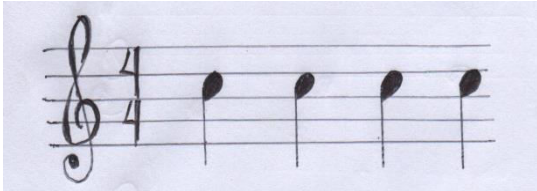
Pamantayan	Napakahusay (4)	Mahusay (3)	Bahagyang Mahusay (2)	Kailangan Pang Paunlarin (1)
1.Natutukoy ang range ng kantang inawit.				
2.Maayos ang pagkakaawit.				
3.Angkop ang paggamit ng kilos at tinig sa pagtatanghal.				
4.Masining ang pagkakatanghal.				



# Tayahin

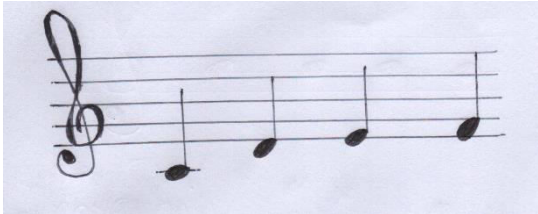
Tukuyin ang mga note/nota sa bawat staff ayon sa melodiya nito at uri ng direksiyon. Isulat ang tamang sagot sa patlang. Ito ba ay Ascending, descending o repeated notes.

1.



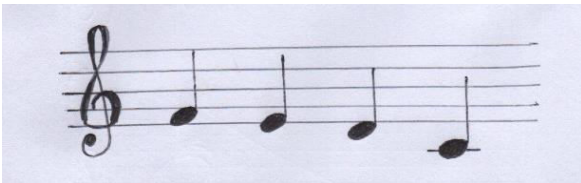
\_\_\_\_\_

2.



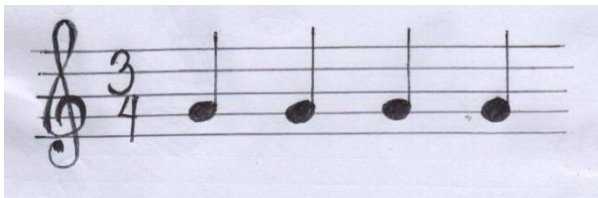
\_\_\_\_\_

3.



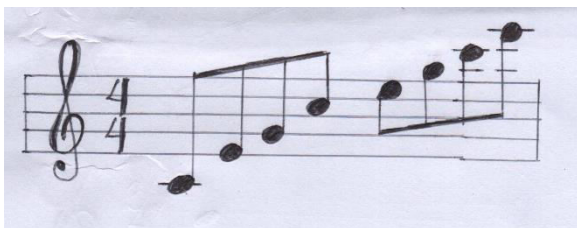
\_\_\_\_\_

4.



\_\_\_\_\_

5.



\_\_\_\_\_



## **Karagdagang Gawain**

Pumili ng isa sa mga awiting bayan sa ibaba. Tukuyin kung ito ay narrow o wide range. Magsanay na awitin ang napiling awiting bayan.

- a. Chua-ay
- b. Bahay Kubo
- c. Ating Cu Pung Singsing
- d. Ili-Ili Tulog Anay
- e. Leron-Leron Sinta

### Region IX: Zamboanga Peninsula Hymn – Our Eden Land

Here the trees and flowers bloom  
Here the breezes gently Blow,  
Here the birds sing Merrily,  
The liberty forever Stays,

Here the Badjaos roam the seas  
Here the Samals live in peace  
Here the Tausogs thrive so free  
With the Yakans in unity

Gallant men And Ladies fair  
Linger with love and care  
Golden beams of sunrise and sunset  
Are visions you'll never forget  
Oh! That's Region IX

Hardworking people Abound,  
Every valleys and Dale  
Zamboangueños, Tagalogs, Bicolanos,  
Cebuanos, Ilocanos, Subanons, Boholanos,  
Ilongos,  
All of them are proud and true  
Region IX our Eden Land

Region IX  
Our..  
Eden...  
Land...

### The Footprints Prayer

One night I had a dream. I dreamed  
that I was walking along the beach  
with the LORD.

In the beach, there were two (2) sets  
of footprints – one belong to me and  
the other to the LORD.

Then, later, after a long walk, I  
noticed only one set of footprints.

“And I ask the LORD. Why? Why?  
Why did you leave me when I am sad  
and helpless?”

And the LORD replied “My son, My  
son, I have never left you. There was  
only one (1) set of footprints in the  
sand, because it was then that I  
CARRIED YOU!

### Trees by Joyce Kilmer

I think that I shall never see  
A poem lovely as a tree.

A tree whose hungry mouth is prest  
Against the earth's sweet flowing  
breast;

A tree that looks at God all day,  
And lifts her leafy arms to pray;

A tree that may in Summer wear  
A nest of robins in her hair;

Upon whose bosom snow has lain;  
Who intimately lives with rain.

Poems are made by fools like me,  
But only God can make a tree.



